



**children's  
institute**

**Healthy** Children | **Thriving** Families  
**Empowered** Communities

Annual Report | 2019





Dear Friends,

The past year has been productive and memorable for Children's Institute. As you will see in the following pages, we hosted a robust slate of events, including our inaugural Cape & Gown Gala which raised \$1.3 million for our life-changing programs. Meanwhile, the planning and fundraising for our 20,000 sq. ft. Frank Gehry-designed campus coming to Watts in 2021 has been steadily moving forward. All the while, our dedicated staff served 26,000 children and families through trauma-informed early education, behavioral health and family strengthening services.

On behalf of our staff and clients, we extend our appreciation to our donors, volunteers and supporters for recognizing and investing in this critical work.

We have a lot to look forward to in the coming year, and we appreciate your ongoing support and involvement.

With our warmest wishes,

**Martine Singer**  
President & CEO

**Paul Kanin**  
Chairman, Board of Trustees



# What We Do

**F**ar too many children are impacted by persistent poverty and toxic stress. Untreated trauma from neglect, abuse and violence can have lasting consequences on young bodies, brains and futures. Children's Institute provides early education, behavioral health and family strengthening services to 26,000 children and families each year. We also train professionals and caregivers in trauma-informed care, evidence-based clinical treatment and parenting.

## VALUES

**Passion:** We believe in the boundless potential of children and families and work zealously to achieve transformational change.

**Innovation:** We seek inventive solutions grounded in best practices and rigorous analysis. We are committed to excellence, impact and sustainability in all we do.

**Equity:** We promote opportunity for communities hit hardest by persistent poverty. We treat everyone with compassion and respect.

**Partnership:** We have the greatest impact when we collaborate with families, community partners and colleagues who are dedicated to the success of the young people we serve.

## MISSION

To transform the lives of children exposed to adversity and poverty in Los Angeles.

## 2019 AT A GLANCE



**25,901**

Children and family members served



**12,496**

Professional training attendees



**966**

Staff members

**191**

Clinicians

**138**

Certified early childhood educators



**38**

Locations



**\$77.3 million**

Operating budget

# Our Impact

## MAKING A DIFFERENCE ACROSS LOS ANGELES

In 2018, the Department of Children and Family Services responded to more than 223,000 allegations of child abuse and neglect in Los Angeles County. As part of the network of organizations working to address this ongoing challenge, our services include early childhood education and home visitation to promote healthy child development and school readiness; evidence-based clinical interventions to address trauma and mental health; child welfare and crisis response services; youth development programs; and family support services.

### CHILDREN AND FAMILIES SERVED (FY 18-19)



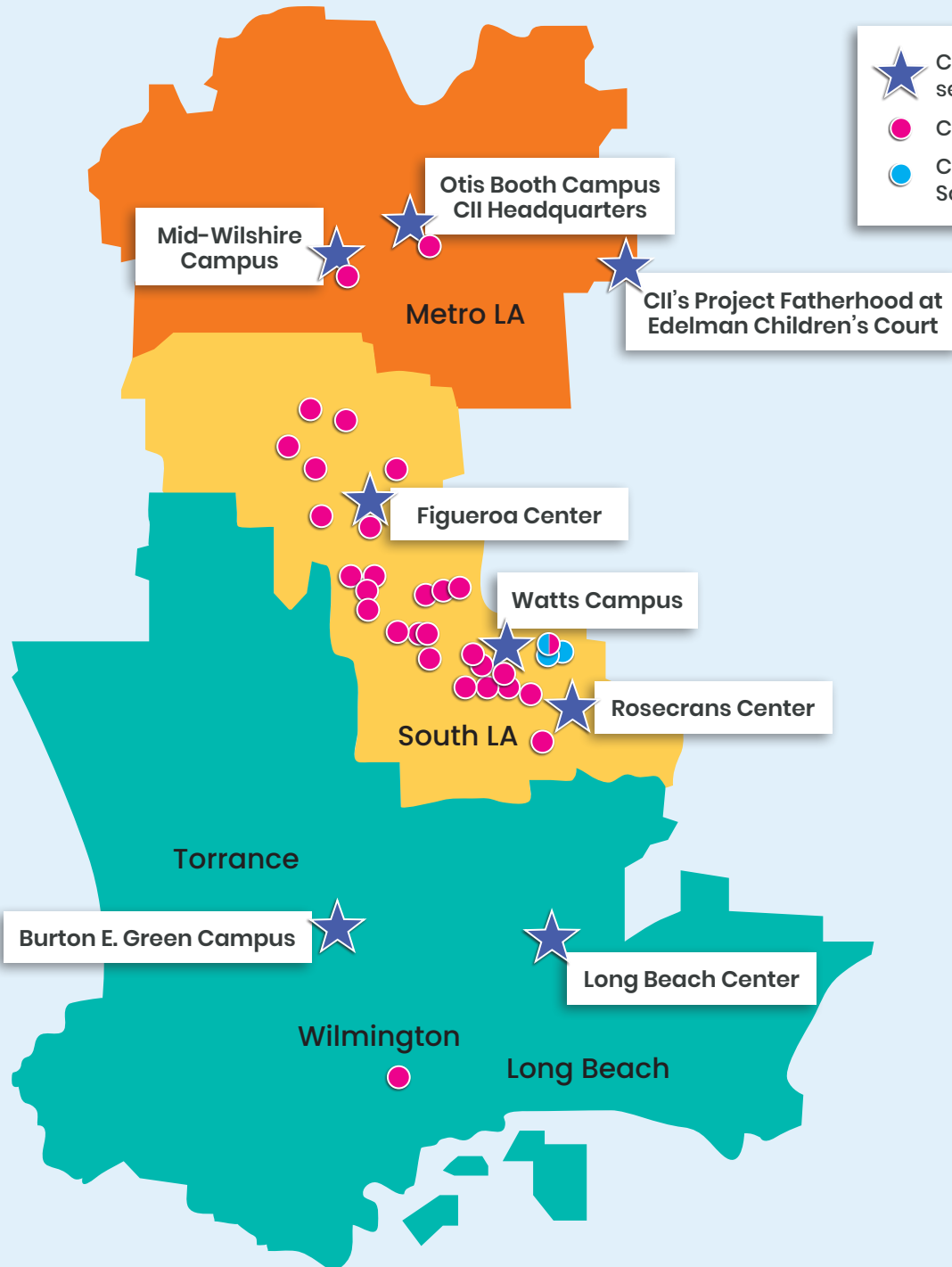
<b>Early Childhood Services</b> Including center- and home-based education.....	<b>2,659</b>	<b>Community Innovations</b> Including crisis response, training, systems change.....	<b>829</b>
<b>Behavioral Health &amp; Wellness</b> Including evidence-based practices, general therapy, intensive support.....	<b>3,144</b>	<b>Strengthening Families</b> Including in-home services, support groups.....	<b>1,398</b>
		<b>Family Members Served.....</b>	<b>17,871</b>
<b>TOTAL.....</b>	<b>25,901</b>		

# CHILDREN'S INSTITUTE LOCATIONS

- ★ CII campus or service location
- CII early childhood center
- CII Neighborhood School partnership

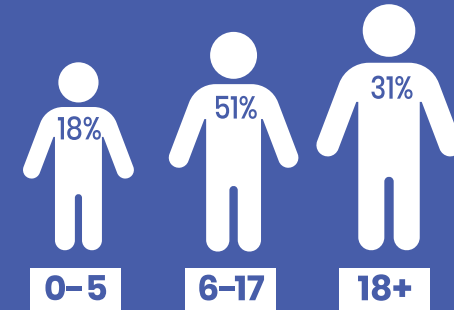
## Service Planning Area (SPA) Key:

- Orange—SPA 4
- Yellow—SPA 6
- Teal—SPA 8

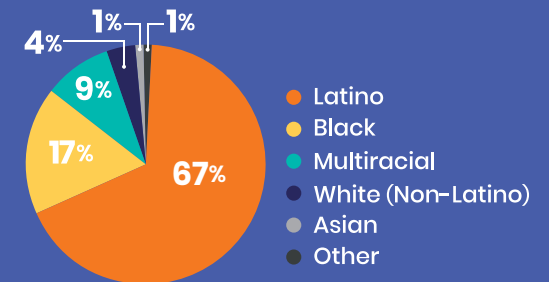


## DEMOGRAPHICS

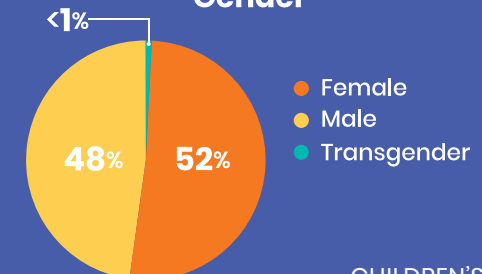
### Age



### Race/Ethnicity



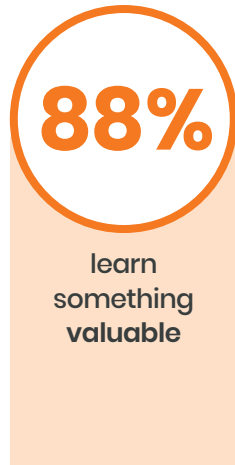
### Gender



# Client Satisfaction

## HOW ARE WE DOING?

### Youth



### Caregivers



## How can I support CII's mission?

### DONATE

Big or small, donations are the lifeblood of our trauma-informed services. We also accept in-kind donations of new items for infants, children and adults.

[childrensinstitute.org/donate](https://childrensinstitute.org/donate)

### VOLUNTEER

From reading to preschoolers to planting a garden, volunteers have a strong impact on children (and it's rewarding for you).

[childrensinstitute.org/volunteer](https://childrensinstitute.org/volunteer)

### ADVOCATE

Community engagement is key for social change—so educate yourself on relevant issues, volunteer your time, attend community events, know your elected officials, vote in elections and help spread the word about important issues.

# Volunteer Appreciation

**BUILDING COMMUNITY, CELEBRATING SUCCESS**

We are extremely grateful to those who donate their time and creativity to benefit children and families in countless ways. Here are just a few examples of volunteers making a difference.



## 3RD ANNUAL GEARS FOR KIDS

In collaboration with Hayworth Inc., partners from 24 major design firms built and donated bikes for kids in our programs.

## AGE OF LEARNING SITE BEAUTIFICATION

Volunteers from Age of Learning transformed the outdoor playground of our Western Head Start Center into a vibrant and interactive space to encourage play and learning.



## UCLA COLLEGE & CAREER DAY

Children ages 7-12 were treated to our first ever College & Career Day in partnership with UCLA Volunteer Center and UCLA Latino Alumni Association. Kids created resumes and figured out the skills they'll need to make their dream jobs a reality. They also got to meet Congressman Jimmy Gomez, UCLA class of '96.

4,305 volunteers... 19,979 hours...  
valued at **\$453,800**



# Cape & Gown Gala

## HONORING BETH & BOB LOWE AND FRANK, BERTA & SAM GEHRY

On November 14, 2018, Children's Institute welcomed 400 guests to the Fairmont Miramar Hotel & Bungalows to celebrate our honorees at the first ever Cape & Gown Gala, which raised \$1.3 million for Children's Institute's programs.

Beth and Bob Lowe were recognized for their lifetime of dedicated service to children and families in Los Angeles' most underserved communities. The Gehry family was honored for their generous pro-bono commitment to design a new 20,000 square foot campus in Watts.

The emcee for the evening was actress and comedienne Loni Love. One of CII's program participants, LaRae, attended with three of her children and gave a moving speech about her journey and how CII has made a positive impact in their lives.



**Above, L to R:** Frank Gehry, Honoree; Paul Kanin, CII Board Chair; Martine Singer, President & CEO, CII; Berta Gehry, Honoree; Bridget Gless Keller, CII Trustee and Watts Building Committee Chair; Sam Gehry, Honoree. **Below:** LaRae, CII Program Participant, with three of her children.



“CII has been a part of my journey from contemplating the worst to accomplishing the best. All four of my children benefited from CII's therapeutic programs, teaching us to work together as a family, learning how to build healthy relationships with ourselves, with one another, and also with our community.”

— LaRae, CII Program Participant





**Above:** Beth Lowe, Honoree; Don Knabe, Award Presenter; Bob Lowe, Honoree.

**Left:** Beth Lowe, Honoree; Channing Dungey, CII Trustee; Martine Singer, President & CEO, CII; LaRae, CII Program Participant.

# Community Innovations

## CHILDREN EXPOSED TO GUN VIOLENCE INITIATIVE



**“Once you’re connected to the effect of just one bullet, you’re never the same.”**

Yvette Martinez,  
CI’s Reach Team

In September of 2018, Los Angeles City Attorney Mike Feuer, Children’s Institute and the Los Angeles Police Department announced the REACH TEAM, a new initiative to support children exposed to gun violence in the Watts community.

When a gunshot is reported in Watts, LAPD assesses the scene and notifies the REACH TEAM, comprised of Children’s Institute staff, to provide an initial crisis response to families as soon as possible. From there, children identified for follow-up support are referred to Children’s Institute to receive counseling services.

The impact of gun violence exposure is associated with learning, health, emotional and behavioral issues, as well as substance abuse later in life. Early intervention and emotional and social support are key in preventing and healing the symptoms of trauma.

**L to R:** Ginger Lavender-Wilkerson, Clinical Program Manager, CI; Lara Drino, Deputy City Attorney; Lt. Gena Brooks, LAPD and CI Trustee.

**Far right photo, L to R:** Deputy Chief Dennis Kato, LAPD; Mike Feuer, LA City Attorney; Martine Singer, President & CEO, CI; Lara Drino, Deputy City Attorney.

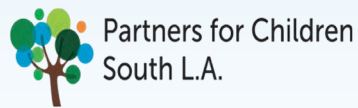


## POWER OF WELLNESS

In May of 2019, over 1,000 kids and family members attended the *Power of Wellness: Community Connections Kickoff* at Ted Watkins Memorial Park in Watts. The event was organized during Mental Health Awareness Month as part of a four-year grant awarded by the Los Angeles County Department of Mental Health called *Innovations 2 - Trauma Resilient Communities: Community Capacity Building*.

The goal of the program is to inform the community of the causes and effects of trauma and how to seek help. Attendees enjoyed a resource fair of more than 60 community service providers and the opportunity to connect through a variety of family-friendly activities including yoga and arts & crafts.

In partnership with:



# Highlights:

## LET THE GOOD TIMES ROLL



### RUNWAY TO SUCCESS

Our Good Tidings Head Start preschoolers participated in their annual fashion show designed to develop and strengthen their self-esteem and confidence.



### CAMP BOOTH

In October 2018, kids from our programs got closer to nature at Camp Booth in central California, where they experienced hayrides, fishing, tie dying, fireside s'mores and lots of singing. In its 8th year, the event was made possible by CII Trustee Emeritus Loren Booth.



### OLYMPIC GAMES

Kids ages 7-12 in our Power Up after-school program learned about different countries and cultures over 10 weeks, culminating in an Olympic Games which included a closing ceremonies celebrating their teamwork and participation skills.



### WINTER FAMILY FESTIVAL

Our 24th Annual Winter Family Festival brought together more than 2,500 kids and families for a festive holiday celebration.



### BOX CAR MOVIE NIGHT

More than 500 families and staff attended the 2nd Annual Movie Night & Car Show in partnership with PBS SoCal at our Watts Campus. The event is designed to prepare kids for success in school while encouraging group activities with families. The earth science and astronomy series *Ready Set Go!* was screened and families combined engineering and art skills to create homemade box cars.



**L to R:** Allyson Manumaleuna, Family Preservation Program Manager, CII; Mark Jonathan Harris, director, *Foster*; Mary Montoya, subject, *Foster*; Jessica Chandler, subject, *Foster*; Deborah Oppenheimer, producer, *Foster*; Martine Singer, President & CEO, CII; Elvis Mitchell, moderator.

## DREAM BIG GRADUATION

Foster youth from our Individualized Transition Skills Program (ITSP) were celebrated at our 3rd Annual Dream Big event for graduating high school and making plans to go on to college. After the ceremony and dinner, each graduate received a dorm kit with college essentials.



**L to R:** Special guest speakers Maraide Green, consultant, *Instant Family*; Sean Anders, writer/director, *Instant Family*; Candi Marie, actress, *Instant Family*.

**Circle:** Special guest speaker Jessica Chandler, Children's Social Worker, DCFS.



## FOSTER SCREENING

In honor of Foster Care Awareness month in May, CII partnered with Film Independent to present a special screening of HBO's *Foster*, a compelling look into the complexities of foster care, showcasing CII's Family Preservation Program in action.



**Right:** Deserving dads from our Project Fatherhood program were inducted into the Dr. Hershel K. Swinger Hall of Fame.

## FATHER DAUGHTER TEA

Project Fatherhood welcomed 35 families to our Otis Booth campus for the 7th annual Father-Daughter Tea. The princess-themed party included tea cup painting, manicures and frame decorating, and is a special opportunity for fathers to bond with their daughters.



## FATHERHOOD SOLUTIONS CONFERENCE

Project Fatherhood's 12th Annual Fatherhood Solutions Conference explored news ways to build and strengthen relationships between dads and their children. Keynote speakers included Angela Parks-Pyles, DCFS Deputy Director, and Dr. Tova Walsh, Assistant Professor, University of Wisconsin-Madison School of Social Work.

# Building on Success

## A NEW FRANK GEHRY-DESIGNED CAMPUS FOR WATTS

Breaking ground in early 2020, Children's Institute's new 20,000 sq. ft. campus is a permanent investment and commitment to the community of Watts. Slated for completion in late 2021, the campus will house critical therapeutic programs and a variety of free supports for children and families, including:

- Individual and group counseling
- Community meeting space
- After-school and youth development activities
- Childcare
- Art and computer classes
- Parenting workshops
- Project Fatherhood sessions



The building will also be home to the Watts Gang Task Force and LAPD's Community Safety Partnership, strengthening ongoing collaborative efforts for peace in the community and relationship-based policing.



**“If you do  
it right, a  
building  
design can  
tell a kid that  
we love you.”**

*—Frank Gehry*

# Support Groups

## CHAMPIONING OUR PROGRAMS AND MISSION

We are extremely grateful to our support groups, who go above and beyond in demonstrating their commitment to our mission. Through fundraising events, volunteer activities and much more, The Colleagues, The C.H.I.P.S. (Colleagues Helpers in Philanthropic Service) and Les Amies help thousands of children and families heal from trauma and go on to lead successful lives.

### THE COLLEAGUES

Founded in 1950, The Colleagues is a women's volunteer non-profit that supports Children's Institute through their resale boutique in Santa Monica and their annual Spring Luncheon.

The Colleagues' 31st Annual Spring Luncheon on April 9, 2019 was hosted by Cristina Ferrare and honored Marlo Thomas with The Colleague's Champion of Children award, presented by Henry Winkler. After the ceremony, the audience was treated to a fashion show of Oscar de la Renta's Fall 2019 Collection by co-creative directors Fernando Garcia and Laura Kim.



**Above, L to R:** Cristina Ferrare, Fernando Garcia, Marlo Thomas, Henry Winkler and Phil Donahue.

**Below:** Martine Singer, President & CEO, CII and Cara Esposito, President, The Colleagues.





## THE C.H.I.P.S.

Since 1966, The C.H.I.P.S. have provided program and fundraising support to Children's Institute. In May 2019, the group held their annual luncheon honoring the Watts Gang Task Force and philanthropists Alex Tuttle and Tiffany Tuttle.

In May, The C.H.I.P.S. also generously supported our Dream Big Graduation ceremony and assisted in assembling dorm kits for foster youth headed to college.

## LES AMIES

For nearly half a century, Les Amies has played an important role in generating much needed resources and funds for Children's Institute. In December of 2018, the Les Amies' Annual Holiday Dinner celebrated the spirit of giving and guests enjoyed dinner, dancing and a silent auction.

Les Amies also volunteered at CII's Winter Family Festival leading children in bingo and ornament decorating.

**Right:** Members of Les Amies volunteering at CII's Winter Family Festival.



**Top:** Members of Children's Institute, The C.H.I.P.S. and honorees Watts Gang Task Force. **Above:** Tiffany Tuttle, Honoree; Martine Singer, President & CEO, CII; Alex Tuttle, Honoree. **Right:** Members of The C.H.I.P.S. volunteering before the Dream Big Graduation.



# Financial Highlights

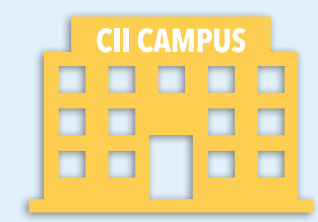
FISCAL YEAR 2018-2019

**C**II's success is due to the generosity of public and private supporters. We are grateful to the many individual, foundation, corporate and board donors, and to our support groups—The Colleagues, The C.H.I.P.S. and Les Amies—whose contributions have allowed us to provide comprehensive, high-quality services to our community's most underserved children and families.

*Managing to the highest non-profit standard, we use*

# 83%

*our operating expenses for direct program services.*



## FY 2018–2019 Summary of Financial Data

### OPERATING REVENUE AND SUPPORT

Government Grants and Contracts	\$	68,617,340
Contributions		6,157,437
Special Events		1,303,325
In-Kind Contributions		1,777,301
Forgiveness of Debt		8,168,553
Training & Other Income		204,541
Investment Income (Net)		1,409,872

**TOTAL REVENUE AND SUPPORT \$ \$87,638,369**

### OPERATING EXPENSES

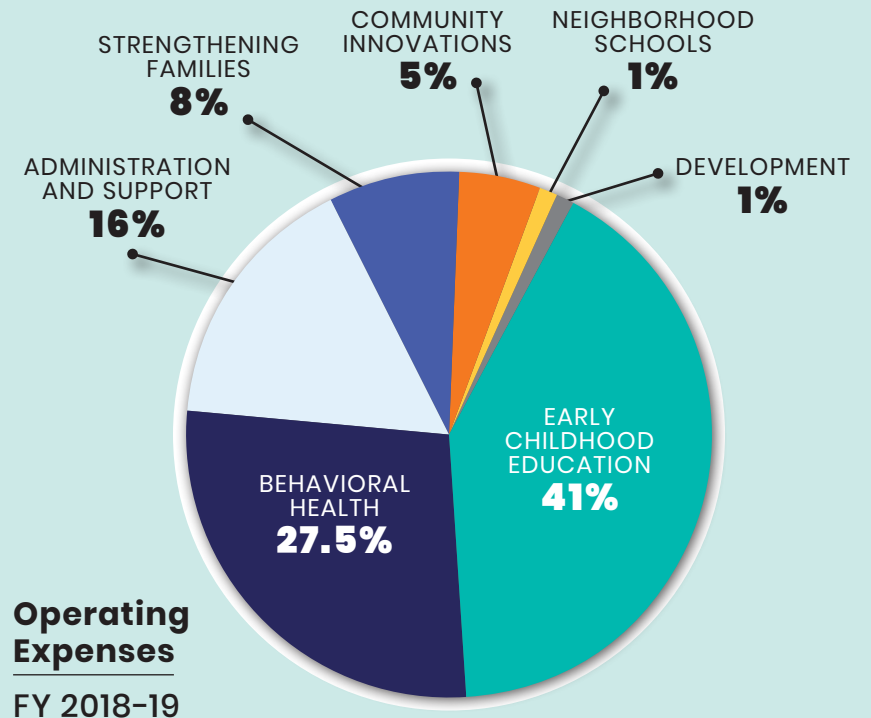
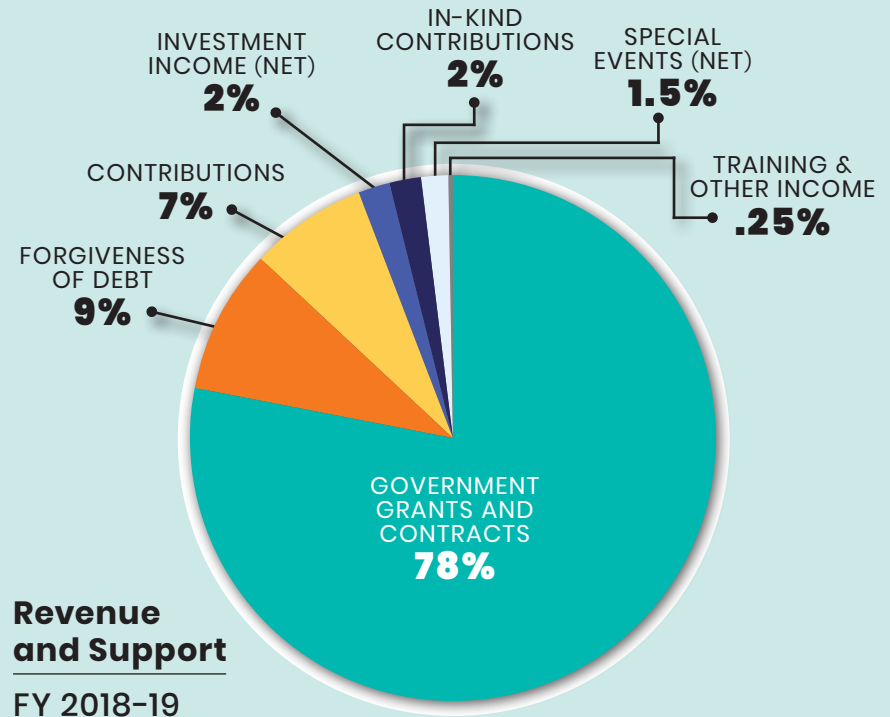
Early Childhood Education	\$	31,569,936
Behavioral Health		21,311,300
Strengthening Families		6,451,018
Community Innovations		4,200,003
Neighborhood Schools		796,408
Administration and Support		12,071,585
Development		908,925

**TOTAL EXPENSES \$ 77,309,175**

Children's Institute's consolidated financial statements are audited annually. The condensed Consolidated Statement of Activities was extracted from the audited consolidated financial statements.

Forgiveness of Debt of \$8,168,553 was a result of the wind-down of the NMTC structure.

Complete audited consolidated financial statements are available upon request.



# Donor Honor Roll

**A LEGACY OF GENEROSITY | JULY 1, 2018–JUNE 30, 2019**

## **\$1M and above**

The Edna McConnell Clark Foundation

## **\$250,000 – \$999,999**

Ballmer Group

The Colleagues

The Estate of Lee Vandervelde

The Harold McAlister Charitable Foundation

Weingart Foundation

## **\$100,000 – \$249,999**

Anonymous

The Carl & Roberta Deutsch Foundation

The C.H.I.P.S.

The Hearst Foundation

Les Amies

Beth and Bob Lowe

The Otis Booth Foundation

Reissa Foundation

Robert H. Tuttle Charitable Lead Trust

The Rose Hills Foundation

## **\$50,000 – \$99,999**

The Ahmanson Foundation

The Atlas Family Foundation

The California Wellness Foundation

California Community Foundation

Herbalife Nutrition Foundation

Chris and Dick Newman and Family

Jean Perkins Foundation

W.M. Keck Foundation

## **\$25,000 – \$49,999**

Dwight Stuart Youth Foundation

Edward Charles Foundation

Lawrence Field

The Horn Foundation

Joseph Drown Foundation

Sally and Paul R. Kanin

Richard and Christine Mack

Michael & Irene Ross Endowment Fund of the Jewish Community Foundation of Los Angeles

R.J. and D.A. Munzer Foundation

David and Barbara Rognlien

## **\$10,000 – \$24,999**

Arthur J. Gallagher & Co.

Bank of America Charitable Foundation

The Beal Foundation

Bergen Foundation

Blossom Trustman Living Trust

The Capital Group Companies Charitable Foundation

Adam and Allison Checchi

City National Bank

David Bohnett Foundation

The DevTo Support Foundation

Chuck and Lauren Diamond

The Dohring Family Foundation

Naomi and Jim Ellison

The Fran & Ray Stark Foundation

Grace Helen Spearman Charitable Foundation

Edward Greenspan

Hosan Foundation

Johnny Carson Foundation

Katz Family Foundation

Suzanne and Ric Kayne

Tarek Kutrieh and Dr. Jennifer Linehan Kutrieh

Leonetti O'Connell Family Foundation

Christy and Michael Lowe

Suzanne and Robert Lowe

Manatt, Phelps & Phillips

Mari and Patrick McAlister

Barry and Carole Patmore and Family

Linda and Donald R. Pennell

Dick Poladian

Joan and Doug Prestine

Gelila Assefa Puck

The Ralph M. Parsons Foundation

Lynda and Stewart Resnick

Todd and Jacqueline Rosen

Patricia and Michael Rosenfeld

Skadden, Arps, Slate, Meagher & Flom LLP

Glenn and Andrea Sonnenberg

Steaven K & Judith G Jones Foundation

Suzanne Marx and Dr. Gary Tearston

Barbera Hale Thornhill

Trojan Dynasty, LLC

Kathleen M. Vanderziel

Venable LLP

Wells Fargo Foundation

## **\$5,000 – \$9,999**

A Thousand Joys

Angelo Family Charitable Foundation

Susan and William Armistead, Jr.

ARUP

Deborah Beckmann

Bernards

Virginia and Austin Beutner  
Catherine and Robert Beyer  
Bogaard Group International  
Capital Group  
Robert and Krishna Daly  
Ex-Consultants Agency  
James and Jaimi Freeman  
Yolanda Gill  
The Goetzman Group  
Marcia Wilson Hobbs  
Daryn McDonald Horton  
In-N-Out Burger Foundation  
Justin Dart Family Foundation  
Kathleen McCarthy Kostlan  
Lear Family Foundation  
Mara W. Breech Foundation  
Bob Montgomery  
New Markets Community Capital  
Nordstrom  
Channing Dungey Power and Scott Power  
Carolyn Clark Powers  
RCI Builders, Inc.  
Shirley and Alfred Scheid  
Swinerton  
Laurence Tighe  
Walt Disney Television  
William H. Hannon Foundation

**\$1,000 - \$4,999**

Susan C. and Stephen E. Adamson  
Michele and Arlen Andelson  
Ken Anderson  
Anonymous  
Rachel and Lee Ault  
Eugene Axelrod  
The B. and M. Rognlien Living Trust  
Dr. Bruce L. Baker  
Aimee and Sam Bakhshandehpour  
Judith and Thomas Beckmen  
The Beveridge Family Foundation  
Mark Binder  
Blackman & Holberton Move Planning Services  
Justine and Robert Bloomingdale

David C. Bohnett  
Paul Breckenridge  
Elizabeth Bunce  
Katherine and Bill Burford  
California Mental Health Services Authority  
Canterbury Consulting, Inc.  
Tim Casey  
Chait & Company  
Francine Champagne  
Craig Chiote  
Doris Coleman  
Jace Cook  
Cushman Family Foundation  
Carl Deutsch  
DSH // architecture  
Carla and Gerald du Manoir  
ECMC Foundation  
The Eli and Edyth Broad Foundation  
Donna Tuttle and David Elmore  
Engineering Employees Services Corp  
Steven Ehrlich  
Suzanne and Richard Farman  
James F. Flaherty  
David Fleming  
Stella Hall Fordyce  
Foreman, JP & BJ Exempt Trust  
Michael and Janet Fourticq  
Timi and Gordon Freshman  
Carol Fuchs and Martin Shafer  
Margaret and James Galbraith  
The Geomar Foundation, Inc.  
George Hoag Family Foundation  
Patricia Glaser  
Tracey Gluck  
Good Old Lew Foundation  
Eunice Goodan  
Louise and Steve Griffith  
Grojean Family Foundation  
Paul Haaga  
Hallock Family Foundation  
Fred and Joyce Hameetman  
Penny and Travis Hansen  
Susan Sands Harbert

Harrison-Chevalier Inc.  
Douglas Hinchliffe  
The Jacqueline and Harry McMahon Family Fund  
John & Dorothy Shea Charitable Fund  
Audrey and Richard Johnson  
Leslie A. Joseph  
JP Morgan Chase & Co.  
Bridget Gless Keller and Paul Keller  
Isabel and Harvey Kibel  
Kirkeby Foundation  
Patricia Owings Kouba  
Theodore M. Leary  
Howard A. Lee  
Sharon Loedding  
Jonathan C. Lurie  
Barbara Machen  
Janet Mackenzie  
Rick Mogan  
Mohawk Bend  
Loren Montgomery  
Peter W. Mullin  
Northern Trust  
Cindy Omiya  
Cathryn Palmieri  
Penske Automotive  
Murray Pepper  
Susan Perry  
Jack Pettker  
Philip T. Winik Charitable Fund  
William Pierpoint  
Steven H. Pokress  
Dallas Price-Van Breda  
Max Ramberg  
Revolution Office  
Beatriz Torrado-Ridgley and Erik Ridgley  
Jaye and John Rogovin  
Brad Rosenberg  
Kathleen and Chip Rosenbloom  
Karen Roth  
Saks Fifth Avenue  
Sale Family Trust  
Susie and Jon Sheinberg  
Martine Singer

Carol & Charles F. Smith  
Lynette Klawon and Todd Sosna  
Martin Spencer  
St. John's Health Center Foundation  
James Thomas  
Mary Beth and Hardy Thomas  
The Tippl Family Fund  
UBS, Private Wealth Management  
US Bank  
Valley Wide AG Labor, Inc.  
Liane and Richard Weintraub

### **\$100 - \$999**

Anonymous  
Perry Family Foundation  
Pomerantz Kavinoky & Co  
Tisbest Philanthropy  
Truist  
UCLA Latino Alumni Association  
VA Desert Pacific - Federal Credit Union  
Wonderful Giving  
YourCause, LLC Trustee for Alliance Data  
Systems, Inc.  
Daisy and Bruce Albertson  
Stephen Allen  
Honey Amado  
Patti Amstutz  
Jacquelyn T. Anderson  
Elham Ardestani  
Bank of America  
Benevity Community Impact Fund  
Carol Biondi  
Michael Broida  
Lt. Gena Brooks  
Paula and Gary Campbell  
Laura Caridi  
Mrs. Allan M. Cartter  
Christina Caruso  
Terrence Casey  
Jennifer and Salvatore Casola  
Elizabeth Castle  
Charity Storage, Inc.  
Peili Chen

Salvatore Cimbolo  
Cioffi Family Charitable Fund  
Michael Cohen  
CoolHaus  
Dennis & Madeleine Durkin Charitable  
Foundation  
DiBuduo & DeFendis Insurance Brokers, LLC  
Mary Ellen Eichler  
John and Julie Eidsvoog  
Sue Engelmann  
Ellie and Art Fredston  
Anita Garnier  
Russell and Nadine Gerns  
Global Strategy Group  
Melissa Goldberg  
Fred and Betty Goldstein  
Patrick Gough  
Linda Griego  
Mark Handler  
Eliz Hovsepian  
Diane Hughes  
Katherine Galbraith Hult  
Arturo Irizarry  
Lan Jaenicke  
Elena and Steve Kandell  
Maribeth and William D. King  
Kohl's Department Stores  
Renata Landres  
Lawrence & Sandra Post Family Foundation  
Stuart Leibsohn  
Lighthouse Career Encourage USA Corp  
Robin Liu  
Mimi MacLean  
Juan Maldonado  
The Marchetti Family Fund  
Marsh & McLennan Companies  
The Marshall Mathers Foundation  
Chad Maxner  
Lynn McCarthy  
Vanessa and Stuart McLean  
Brian McLoughlin  
Thomas Meehan  
Sharon Messer

Mindling-Schulman Family Foundation  
Lisa Baker Morgan  
Morley Group Foundation  
Caylan Myronowicz  
Bradley Myslinski  
Liz Nelson  
Matthew O'Donnell  
Brian O'Laughlin  
David Olson  
Paige Orloff  
Anna M. Patterson  
Tabetha Peavey  
Arline and Buddy Pepp  
Anthony Perliss  
Perry Family Foundation  
Pomerantz Kavinoky & Co  
Garret Rice  
Wendy Schwartz  
Dave Severino  
Charlotte and Rick Shepard  
Mark Shinderman  
Suzanne Singer  
Leslie Anne Steiner  
Phil and Emada Tingirides  
Elizabeth and Mark Tingloff  
Tisbest Philanthropy  
Truist  
UCLA Latino Alumni Association  
VA Desert Pacific - Federal Credit Union  
Megan Webber  
Hal and H. Candis Williams  
Gena Bell and Dave Witherow  
Wonderful Giving  
YourCause, LLC Trustee for Alliance Data  
Systems, Inc.

***Thank you to everyone who donated to CII. We also extend our thanks to those who have provided in-kind support.***

## BOARD OF TRUSTEES

### Chairman of the Board

Paul R. Kanin – Kanin Soffer

### Vice Chair

Adam Checchi – Checchi Capital Advisers

### Treasurer

Tarek Kutrieh – Blizzard Entertainment

### Secretary

Barbera Hale Thornhill – Impact Design

\*Raúl E. Alvarado – A Thousand Joys

Catherine Beyer – Community Leader

\*Loren Booth – Booth Ranches

Gena Brooks – Los Angeles Police Department

William R. Burford – Bonel Management

Charles P. Diamond – Retired, O'Melveny

Channing Dungey – Netflix

James G. Freeman – Cardinal Industrial

Steve Gomez – Tech Executive and Advisor

Sunil Gunderia – Age of Learning

Marcia W. Hobbs – Retired, Beverly Hills Courier

Nina Holland – CII Early Head Start Policy Council

Bridget Gless Keller – Bridget Gless Designs

Suzanne Marx – Community Leader

Sally J. Michaels – Community Leader

Lisa Baker Morgan – Attorney-at-Law, Writer and Chef

Chris Newman – Community Leader

Barry Patmore – Retired, Accenture

Gelila Assefa Puck – Couturier

David Rognlien – Cadna Automotive

Glenn A. Sonnenberg – Latitude Management Real Estate Investors

Emada E. Tingirides – Los Angeles Police Department

Kathleen M. Vanderziel – The Capital Group Companies

\* Trustee Emeritus

---

## EXECUTIVE STAFF

### Martine Singer

*President and Chief Executive Officer*

### Todd Sosna, Ph.D.

*Chief Program Officer*

### Catherine Atack

*Senior Vice President and  
Chief Development Officer*

### Gene Straub

*Executive Vice President and  
Chief Finance and Operating Officer*

### James Colón, Ed.D., MBA, SPHR-CA

*Senior Vice President of Human Resources  
and Chief People Officer*



## children's institute

2121 W. Temple Street | Los Angeles, CA 90026

To make a donation or become a volunteer,  
visit [childrensinstitute.org](https://www.childrensinstitute.org)



All children appear with the consent of their parents or guardians and are not under the jurisdiction of the court or child protective services.

© 2019 by Children's Institute | All rights reserved.